



Vytex

GEORGETOWN[®] SERIES

The Ultimate in Quality & Durability

FORM MEETS FUNCTION

The Georgetown Series is a masterpiece of energy-efficiency with design details that add beauty and functionality to any home. Its unique construction and technologically-advanced features help maintain the comfort levels in your home while keeping your energy costs low. Custom built to perfection, the Georgetown Series combines style and strength to give you beautiful, long-lasting windows you can be proud of.



FEATURES & PERFORMANCE

DURABILITY & DEPENDABILITY

Specially formulated PVC and welded sash and frame offer long-lasting durability.

ADVANCED LOCKING SYSTEM

Deluxe limit lock provides added security while using the window for ventilation. Cam-type lock and keeper pulls and keeps your window sashes tightly together for a complete weather-tight seal.

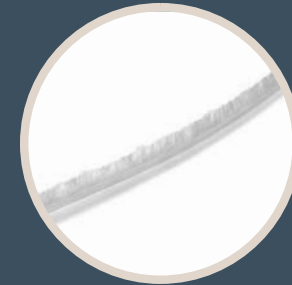
VIRTUALLY MAINTENANCE FREE

Special formula PVC never needs painting, makes cleaning a snap, and prevents scratching and denting.

ADVANCED INSULATING CAPABILITIES

Multi-chambered, hollow thermal insulating system provides more dead air space for better insulation and adds greater strength and durability to the window. Integral weatherstripping decreases air infiltration and will never peel off.

**LOW AIR INFILTRATION RATING OF .09.
THAT'S OVER 3X BETTER THAN THE
INDUSTRY STANDARD!**



ADVANCED WEATHERSTRIPPING

Integral weatherstripping decreases air infiltration and will never peel off.



WELDED SASH & FRAME

Welded sash and frame corners mean long-lasting durability and dependability.




CLEAN WITH EASE

Both sashes are designed to tilt inward for accessibility and easy cleaning.

ADVANCED GLASS OPTIONS

ENERGY SAVER PLUS™


Double-paned with one pane of high-performance Low-E glass
Argon gas-filled insulated glass unit
DuraTex™ Warm Edge Spacer System

 VYTEX CORPORATION VINYL FRAME (8700-DH) DUAL GLAZE • ARGON • LOWE (272) VERTICAL SLIDER WINDOW VYW-A-41-00357-00001	
ENERGY PERFORMANCE RATING	
U-Factor (U.S./I-P) 0.29	Solar Heat Gain Coefficient 0.28
ADDITIONAL PERFORMANCE RATINGS	
Visible Transmittance 0.52	Air Leakage (U.S./I-P) ≤0.3
<small>Manufacturer certifies that these ratings conform to applicable NFRC procedures for determining whole product performance. NFRC ratings are determined for a fixed set of environmental conditions and specific product size. NFRC does not recommend any product and does not warrant the suitability of any product for any specific use. Consult Manufacturer's literature for other product performance information.</small>	

*All values shown above are for Georgetown double-hung windows without grids.

TripleSilverLoE™

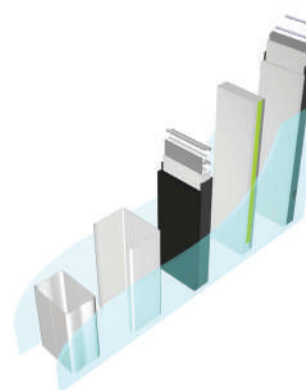
Double-paned with one pane of high-performance TripleSilverLoE™ glass
Argon gas-filled insulated glass unit
DuraTex™ Warm Edge Spacer System

 VYTEX CORPORATION VINYL FRAME (8700-DH) DUAL GLAZE • ARGON • LOWE TRIPLE SILVER (366) VERTICAL SLIDER WINDOW VYW-A-41-00358-00001	
ENERGY PERFORMANCE RATING	
U-Factor (U.S./I-P) 0.29	Solar Heat Gain Coefficient 0.21
ADDITIONAL PERFORMANCE RATINGS	
Visible Transmittance 0.49	Air Leakage (U.S./I-P) ≤0.3
<small>Manufacturer certifies that these ratings conform to applicable NFRC procedures for determining whole product performance. NFRC ratings are determined for a fixed set of environmental conditions and specific product size. NFRC does not recommend any product and does not warrant the suitability of any product for any specific use. Consult Manufacturer's literature for other product performance information.</small>	

*All values shown above are for Georgetown double-hung windows without grids.

DURATEX™ SPACER SYSTEM

Spacers play an integral role in window performance and can significantly boost the energy efficiency. Our DuraTex™ system uses warm-edge technology to help block heat's escape path and provide exceptional thermal performance in your home. Other benefits of the DuraTex™ spacer system include reduced condensation and more comfortable humidity levels inside your home.



A CLOSER LOOK

Backed by years of innovation and experience, our windows offers exceptional insulation capabilities with the promise of long-lasting durability. We've carefully designed every detail of the window to meet or exceed industry standards and to offer the highest quality performance possible. You can purchase our windows with peace of mind knowing they'll last.

1. 5 DEGREE SLOPED SILL

Our carefully designed slope sill is the optimal angle for water runoff and to prevent air infiltration.

2. Q-LON COMPRESSION GASKET

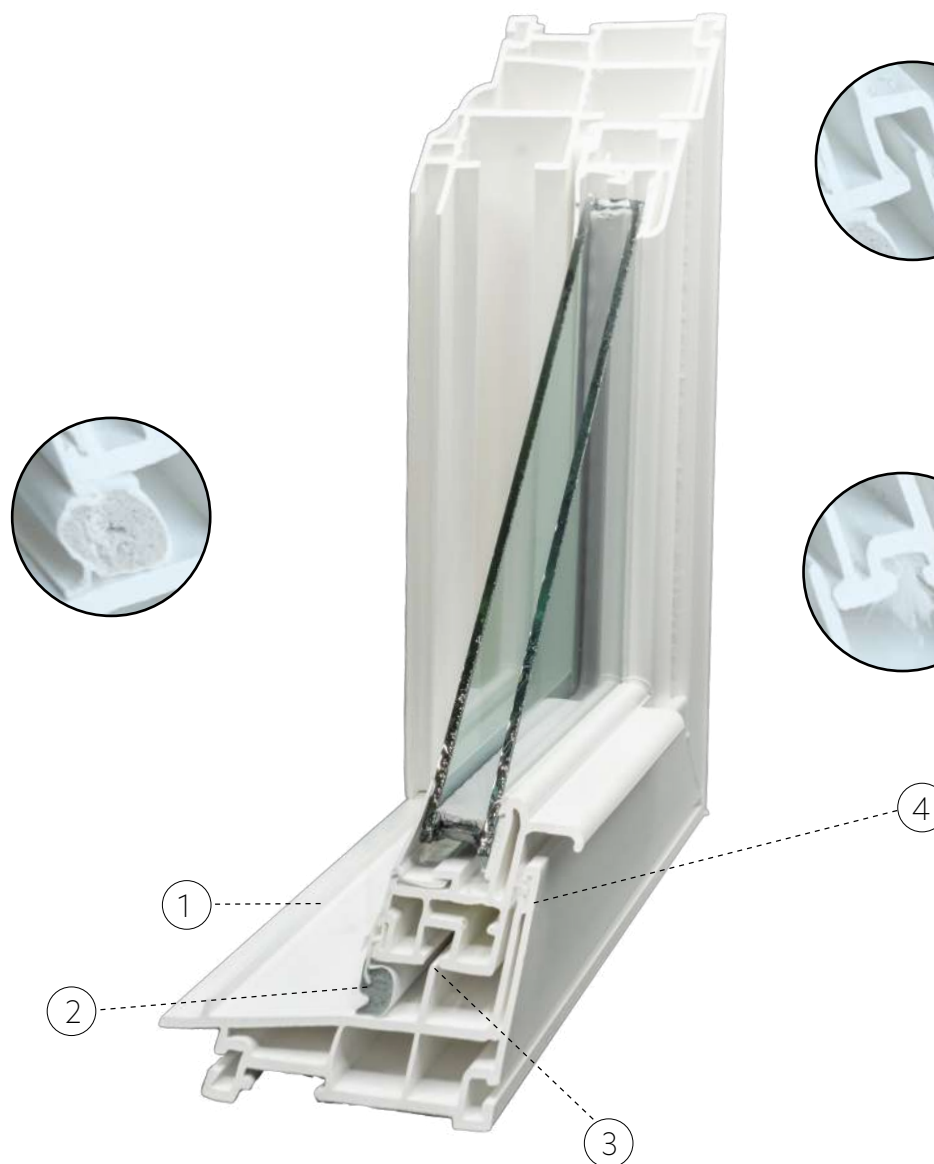
Our Q-lon, memory foam, compression bulb-seal gasket is the most energy-efficient weatherstripping currently used in the industry today. It adds barriers and diversions to help prevent water infiltration and drafts.

2. BOTTOM SASH INTERLOCK

Our innovative bottom sash interlock ensures a tighter seal helping to reduce drafts and decrease your energy bills. Provides structural strength during heavy wind loads by locking the sash in place.

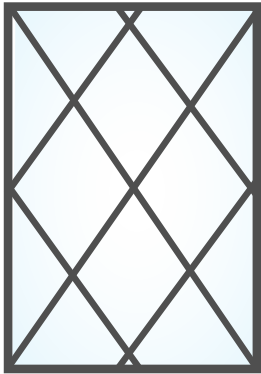
4. TRIPLE FIN WEATHERSTRIPPING

Our anti bacterial protected weatherstripping has three fins to create more barriers and diversions for water and air penetration. It helps prevent allergy triggers such as dust, mold, mildew, pollen and bacteria.

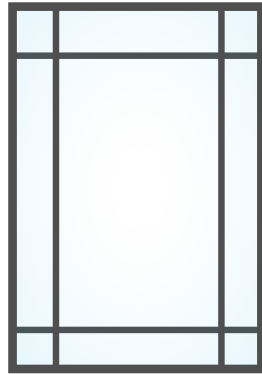


DESIGN OPTIONS

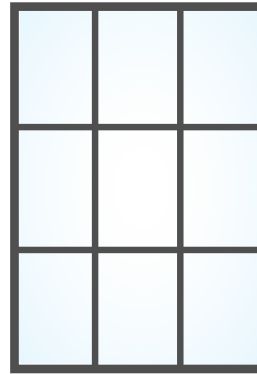
Choose from a wide selection of window styles including bay, bow, double hung, picture, and sliding varieties. Add grid details to further customize your windows and invite interest and elegance to enhance any style home.



DIAMOND



PRAIRIE



COLONIAL

Additional patterns available upon request

TIMELESS BEAUTY



FLAT



CONTOUR



OUR PROMISE

At Vytex, we guarantee your windows for life.* Our promise to you is that in the course of normal use, our products will be free from defects in material and workmanship for as long as you reside in your home. You can rest easy knowing Vytex windows and doors will maintain their function and beauty for years to come.

*Covers materials only. Labor and delivery are not included.



CORPORATE OFFICE/MANUFACTURING
9425 Washington Boulevard N, Laurel, Maryland 20723
☎ 301.362.1000 • ☎ 877.747.8735
www.vytexwindows.com

